

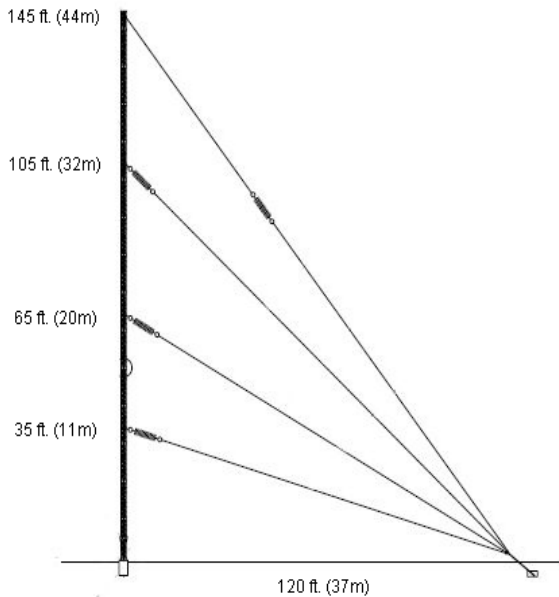


## 145 ft. Mast Antenna

Part Number: SLF10066

SPECIFICATION SHEET

5055 Belmont, Beaumont, TX 77707  
 Phone +409.842.1717  
 Fax +409.842.2987  
 sales@southernavionics.com



\*Information provided is subject to change without notice

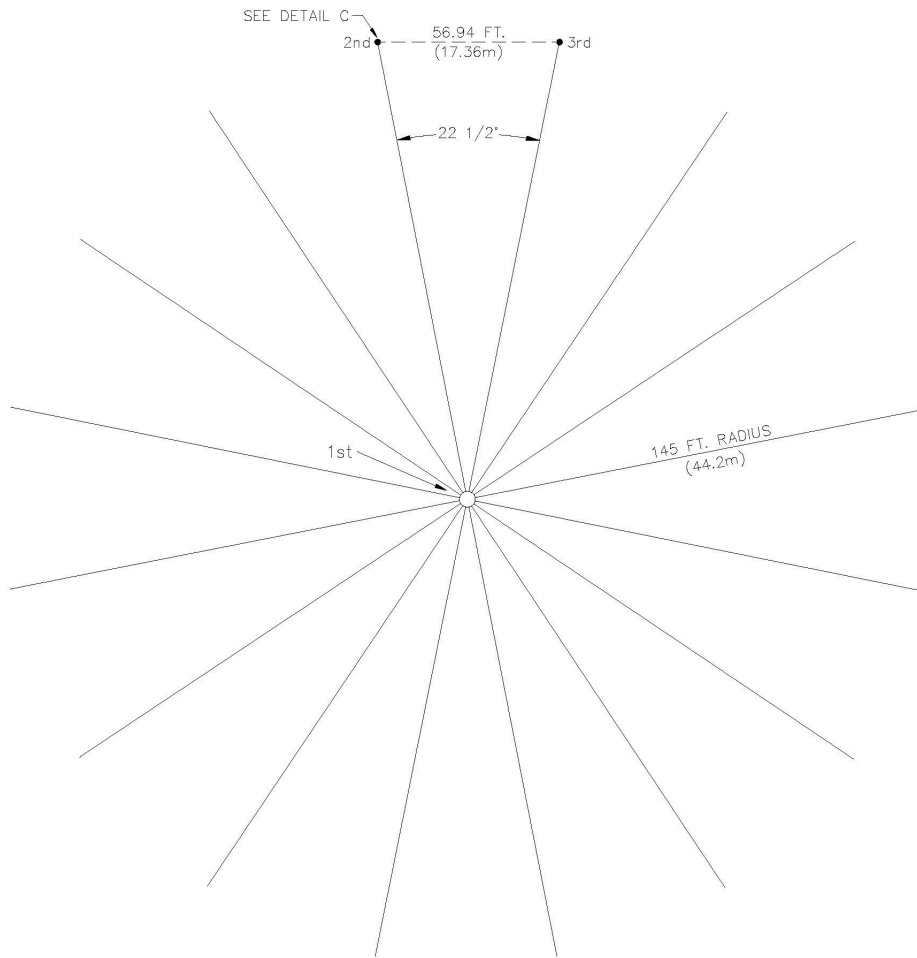
FEATURE	SPECIFICATION
Resistance	2-30 Ohms, 10 Ohms typical
Max Power Rating	4000 Watts PEP / 1000 Watts carrier power at 100% amplitude modulation
Capacitance	680pF with standard Top Loading Guy wires; 1018pF with optional perimeter wire loading
Frequency of Operation	190 - 650 kHz
Polarization	Vertical
Pattern	Omni-directional
Antenna Gain	-4.1 dBi@ 300 kHz
Electrical Length	92 ft. (28m), 110 ft. (33m) with perimeter wire
Wind Rating	130 mph (209km/h)
Ice Rating	0.4 in. (1cm) ice accumulation
Height	145 ft. (44m)
Sections	13 (thirteen) 10ft. (3m) sections, 2 (two) 5ft. (1.5m) RF insulator sections, 1 (one) 5 ft. (1.5m) top section
Finish	Galvanized steel to ASTM A123
Temperature Range	-50°C - +70°C
Base Pier Rating	22000 lbf. (97860 N)
16 Radial Ground System	2500 ft. (762m) of #10 AWG soft-drawn copper wire, 17 6 ft. (2m) ground rods, ground clamps, associated hardware
Optional Equipment	Installation Kit, Antenna Simulator, Enhanced Counterpoise SLF87770, Obstruction LED kit SLJ00207

### **Mechanical:**

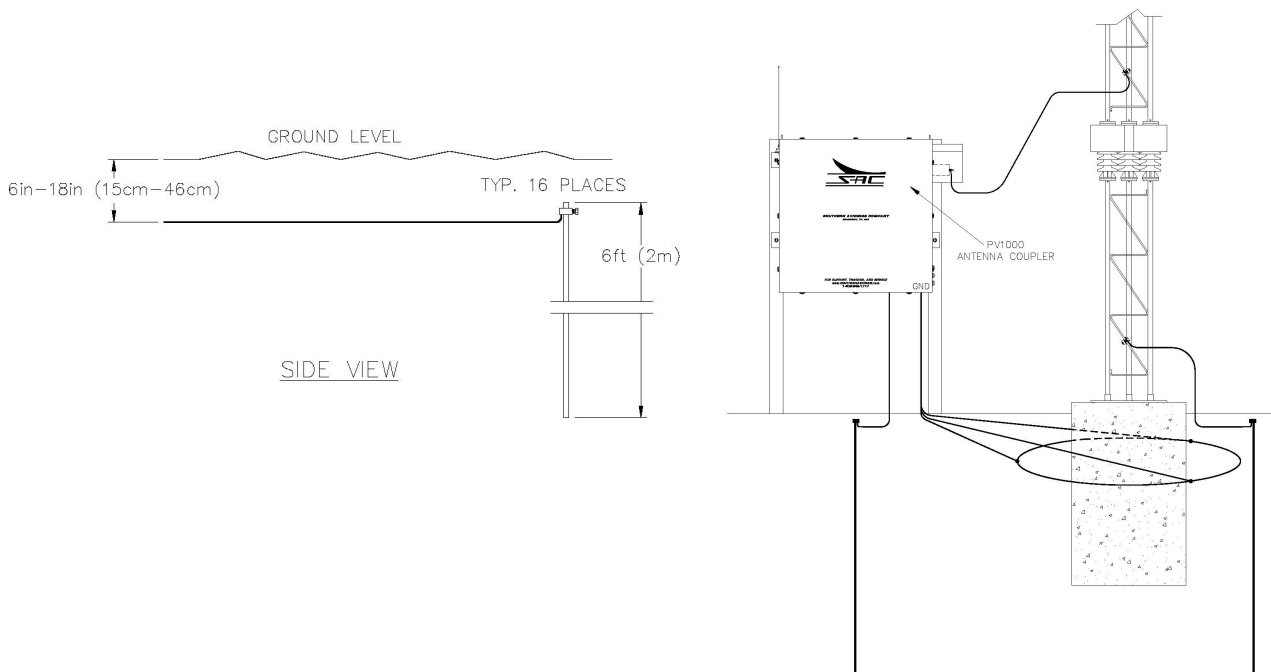
The antenna is made of 14.5 galvanized steel sections configured on 18 in (46cm) equilateral triangular design with electrically welded continuous steel "zigzag" cross bracing. The lattice tower sections are designed in accordance with U.S. National Standard ANSI/EIA-222 F.

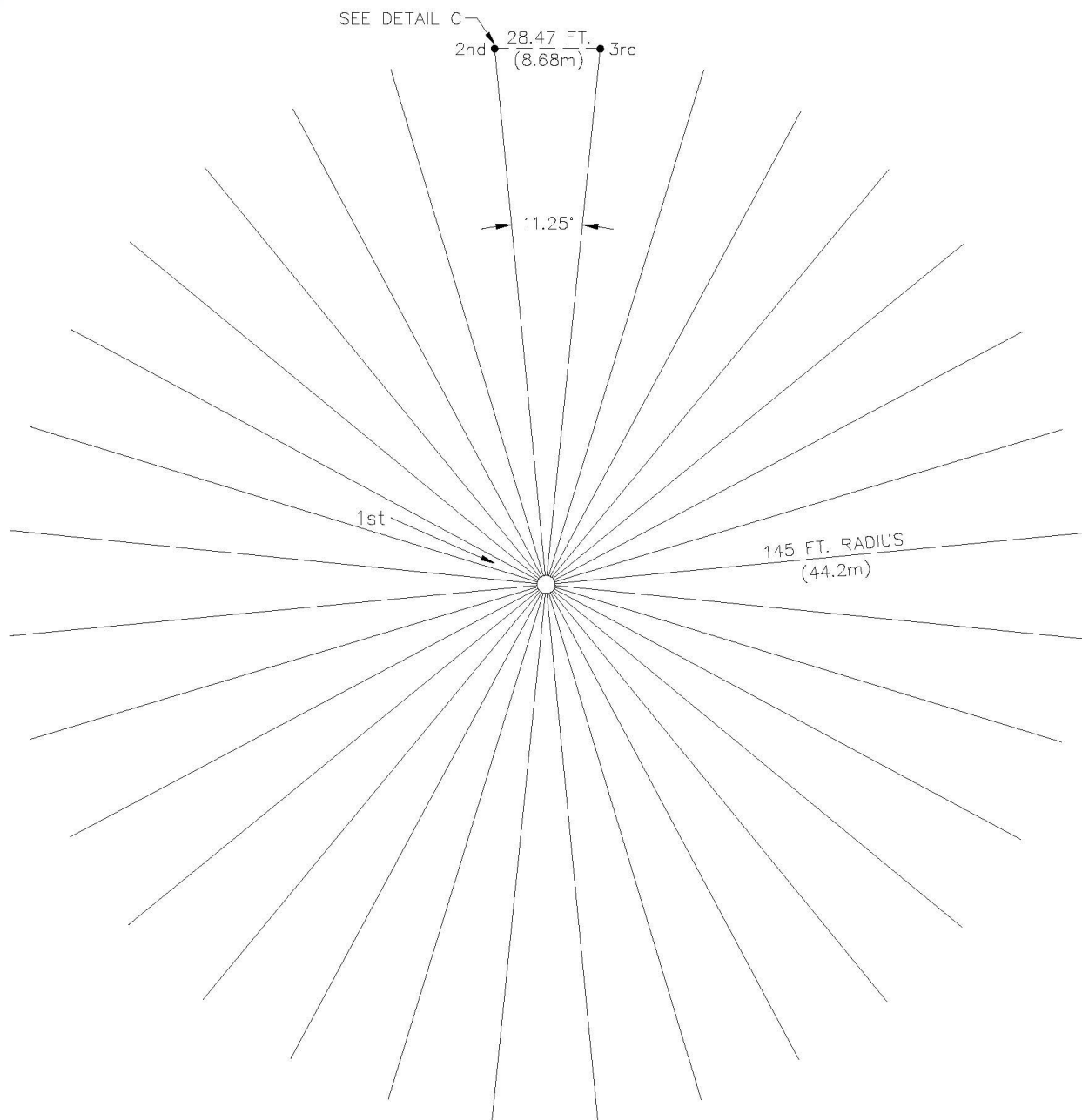
Three (3) high voltage insulators are used to isolate the radiator from the ground. Rain shields are included to prevent water sheeting during heavy rain. Three top-loading guy wires are used to develop and enhance antenna capacitance.

# Counterpoise Diagram

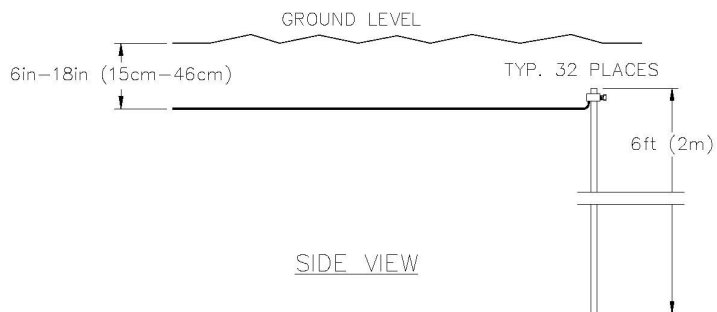


16 Radial Counterpoise Diagram





32 Radial Counterpoise Diagram



**Application:**

Sixteen (16) radials are generally adequate for "normal" soil, but in cases of poor ground conductivity, the number of radials can be doubled by using option SLF87770 which will double the number of radials to 32.