

UltimateAir Recommended Ventilation Ducting Kit
for the **200DX** ERV

Adjustable Vents 4" Qty 9



Wye Connector 8x6x6 inch Qty 2
6x4x4 inch Qty 4
4x4x4 inch Qty 1



Flexible Duct, Gray 4"X 50'
6"X 25'
8"X 25'



Insulated Flexible Air Duct R4.2, Silver 8"X 25'



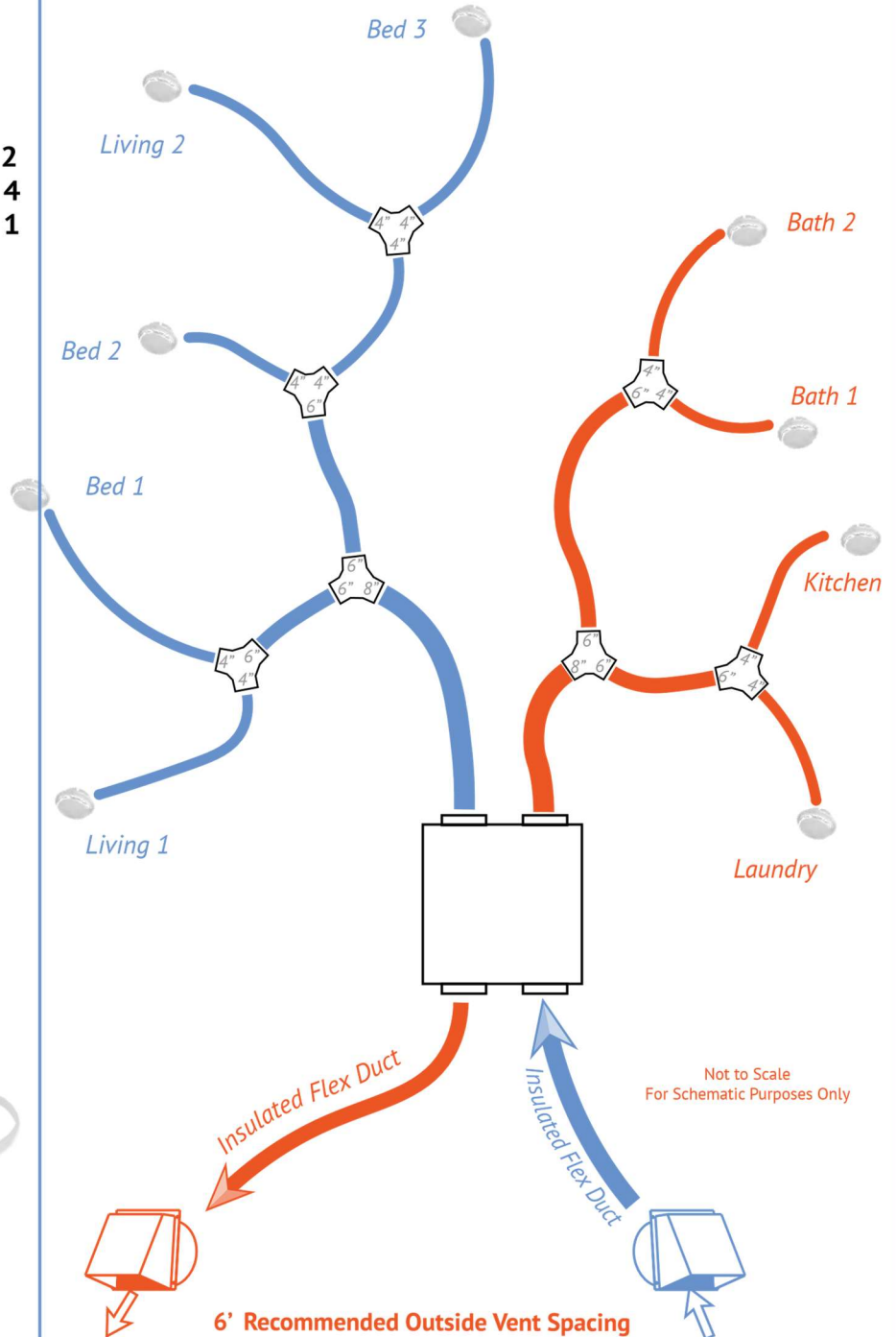
Exterior Hood Kit 8" Qty 2

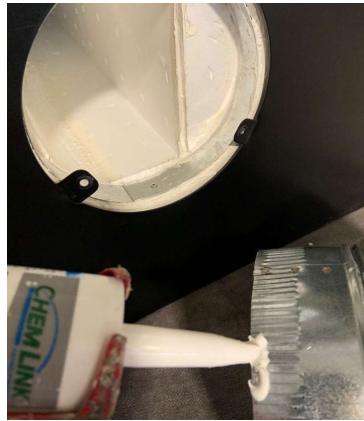
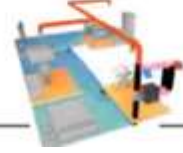


Tie Wraps Qty 10



Mastic Tape Qty 3





1. Bend tabs out

2. Apply sealant, insert duct, and run fastening screws in place



3. Tape Inner Duct



4. Tie Insulated Sleeve to Collar

