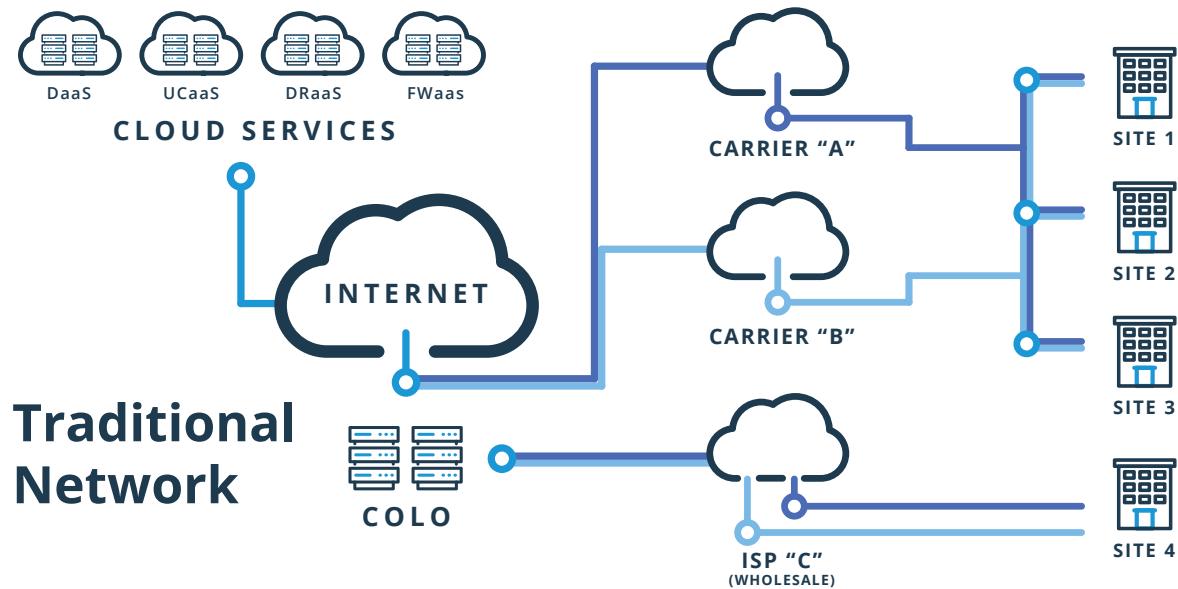


SD-WAN Virtualizes Networks Into a Single Managed Solution



MULTAPPLIED
NETWORKS

Traditional multi-site networks rely on individual services from multiple carriers or service providers. Deploying, managing and changing this architecture is time-consuming, complex, and expensive. Businesses need flexibility to deploy and change their networks easily and ensure secure communications.



Traditional Network

An SD-WAN network, pictured below, virtualizes networks, enabling the SD-WAN provider to build a virtual network as an overlay on multiple carriers' last-mile connectivity. The SD-WAN provider manages the network, including IP addressing, routing, prioritization and other network characteristics end-to-end. Multiple circuits and Encryption provide additional security to centralized and/or on-premise Firewalls. SD-WAN can use commercial broadband Internet or in a hybrid deployment, use fiber and Internet. In either case, the SD-WAN provider has visibility and control over all circuits. White-box, containerized SD-WAN endpoints can be at customer premises or in Cloud or Colo facilities, integrating all endpoints into a single managed network.

SD-WAN Network

