

THE ECONOMICS OF OBESITY CARE

Achieve significant revenue from the screening and treatment of patients suffering from obesity

*More Screenings
Better Care*

MORE REVENUE

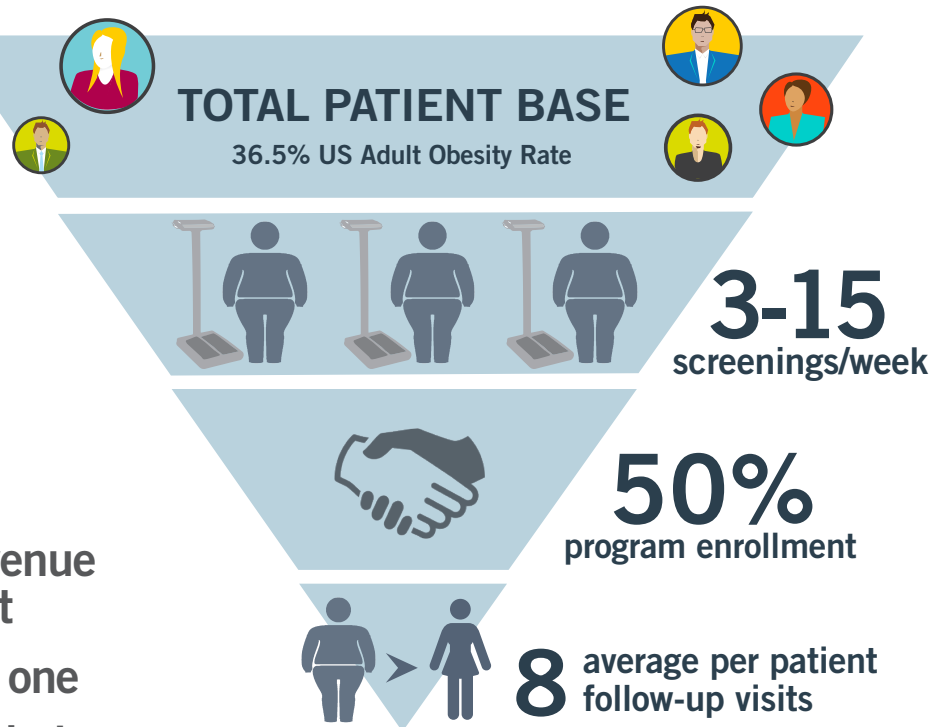
| # screenings per week | Avg revenue per month |
|-----------------------|-----------------------|
| 3 | \$10K-\$12K |
| 6 | \$20K-\$24K |
| 9 | \$30K-\$36K |
| 12 | \$40K-\$48K |
| 15 | \$50K-\$60K |



REMEMBER...USPSTF RECOMMENDATIONS:

- Screen *all* adult patients for obesity
- 12-26 follow-up care visits a year for BMI 30+

the revenue formula



- Up to 100% more revenue vs. typical patient visit
- ROI achieved in week one
- Cash plus insurance reimbursement

WHO CAN TREAT OBESITY?



- MD
- NP
- DO
- PA

WHAT ARE THE COSTS?

- \$0 capital costs
- \$495/mo per location
- meal replacement products based on practice demand resold at high margins



the center for medical weight loss®

info@cmwl.com • 800-599-4190 • cmwl.com